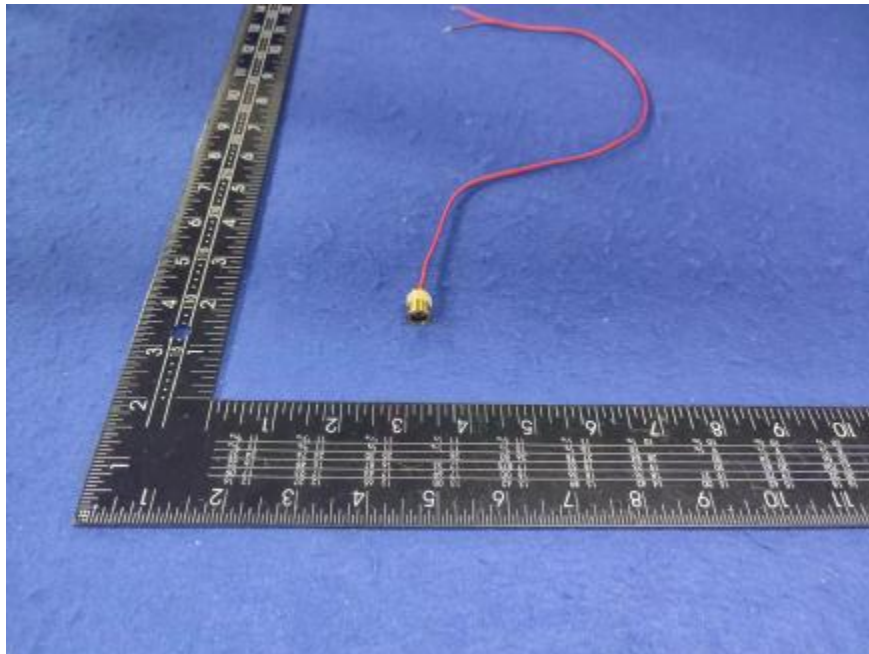


Luminaire Photograph



Light Output Ratio:	68.3%	
Luminaire Power:	0.9184 W	
SHR Nominal:	0.00	Calculated using the TM5
SHR Maximum:	0.30	fine grid method.

C Range: 0 - 360DEG
C Interval: 30.0DEG
Test Speed: HIGH
Temperature: 25.3 °C
Operators: zoe
Test Date: 2024-10-14

γ Range: 0 - 180DEG
 γ Interval: 1.0DEG
Test System: EVERFINE GO-SPEX500_V1 SYSTEM V2.00.461
Humidity: 65.0%
Test Distance: 3.160m [K=1.0000]
Remarks: LAMP: BXCP-30G-11L-J11-3-A1-00-0-0 Ra: 90
LENS: PM-0137 30R
NOT DRIVER: 300mA
30minutes warm-up

LUMINOUS INTENSITY DISTRIBUTION DIAGRAM

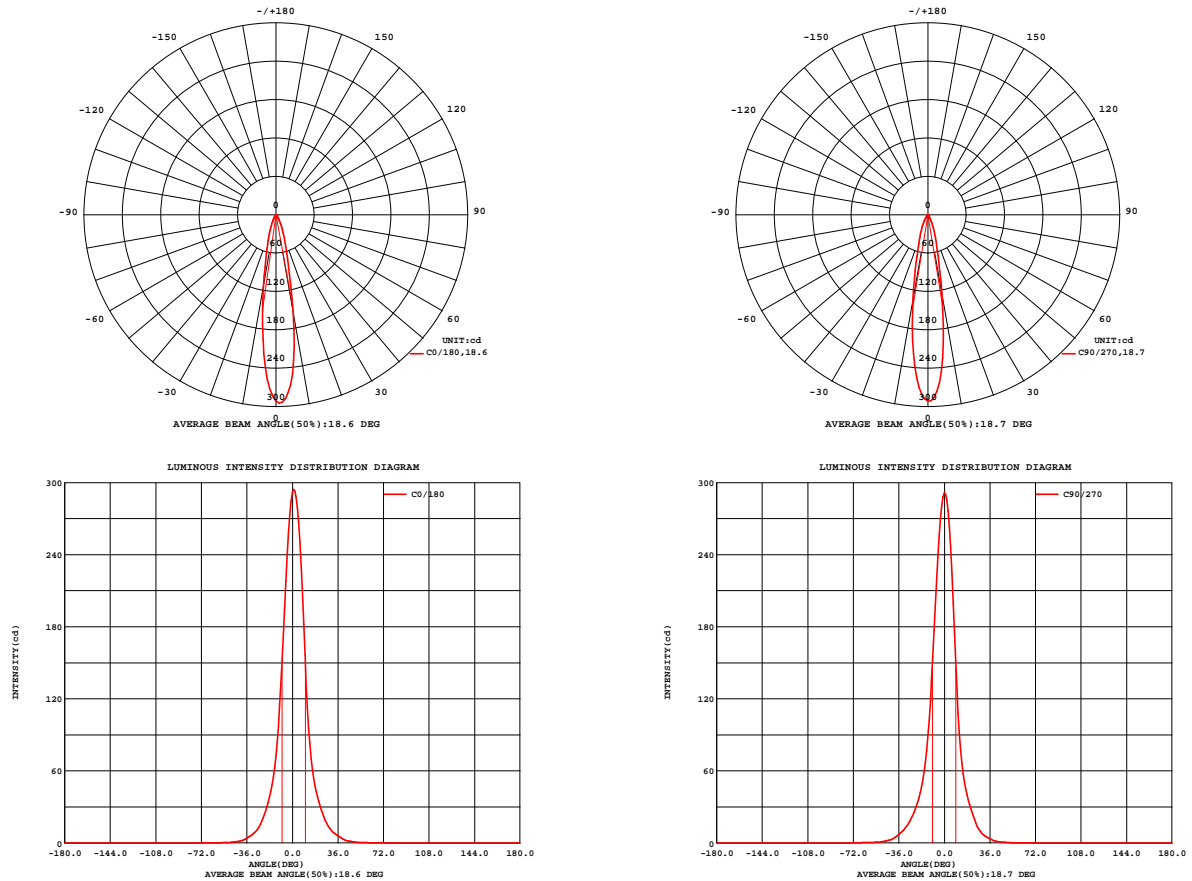


Fig. C0/C180

Fig. C90/C270

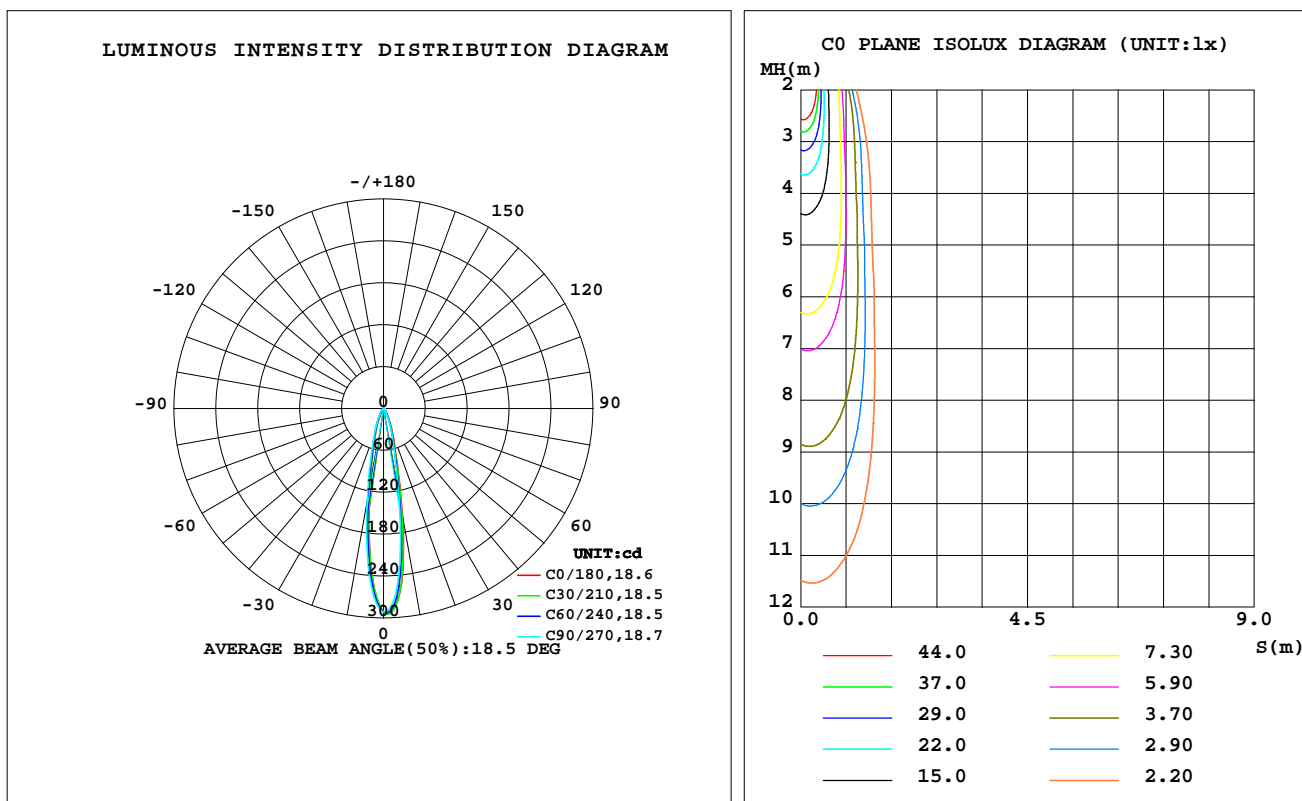
C Range: 0 - 360DEG
C Interval: 30.0DEG
Test Speed: HIGH
Temperature:25.3℃
Operators:zoe
Test Date:2024-10-14

γ Range: 0 - 180DEG
γ Interval: 1.0DEG
Test System:EVERFINE GO-SPEX500_V1 SYSTEM V2.00.461
Humidity:65.0%
Test Distance:3.160m [K=1.0000]
Remarks: LAMP:BXCP-30G-11L-J11-3-A1-00-0-0 Ra:90
LENS:PM-0137 30R
NOT DRIVER:300mA
30minutes warm-up

LUMINAIRE PHOTOMETRIC TEST REPORT

Test:U:3.0612V I:0.3000A P:0.9184W PF:1.0000 Freq:49.99Hz Lamp Flux:76.466x1 lm		
NAME: 2468.100	TYPE:	WEIGHT:
SPEC.: 3000K	DIM.:	SERIAL No.: 2410141243
MFR.: RISE	SUR.: 0.00002826m2	Shielding Angle:

DATA OF LAMP		PHOTOMETRIC DATA Eff: 56.86 lm/W			
MODEL	Brideglux	Imax(cd)	294.6	S/MH(C0/180)	0.28
NOMINAL POWER(W)	1	LOR(%)	68.3	S/MH(C90/270)	0.32
RATED VOLTAGE(V)	4	TOTAL FLUX(lm)	52.215	η UP,DN(C0-180)	0.0,32.9
NOMINAL FLUX(lm)	76.466	CIE CLASS	DIRECT	η UP,DN(C180-360)	0.0,35.3
LAMPS INSIDE	1	η up(%)	0.0	CIBSE SHR NOM	0.00
TEST VOLTAGE(V)	4	η down(%)	68.3	CIBSE SHR MAX	0.30



C Range: 0 - 360DEG
C Interval: 30.0DEG
Test Speed: HIGH
Temperature:25.3℃
Operators:zoe
Test Date:2024-10-14

γ Range: 0 - 180DEG
 γ Interval: 1.0DEG
Test System:EVERFINE GO-SPEX500_V1 SYSTEM V2.00.461
Humidity:65.0%
Test Distance:3.160m [K=1.0000]
Remarks: LAMP:BXCP-30G-11L-J11-3-A1-00-0-0 Ra:90
LENS:PM-0137 30R
NOT DRIVER:300mA
30minutes warm-up

ZONAL FLUX DIAGRAM

ZONAL FLUX DIAGRAM:

γ	C0	C45	C90	C135	C180	C225	C270	C315	γ	Φ zone	Φ total	%lum,lamp
10	156.7	143.9	127.2	115.8	113.3	121.3	135.8	152.5	0- 10	19.41	19.41	37.2,25.4
20	38.15	34.60	32.13	30.27	30.53	33.64	37.77	40.13	10- 20	18.41	37.83	72.4,49.5
30	11.47	9.328	7.719	7.392	8.422	10.78	13.44	13.43	20- 30	9.024	46.85	89.7,61.3
40	3.396	2.389	1.689	1.613	1.981	3.110	3.968	4.185	30- 40	3.740	50.59	96.9,66.2
50	0.7622	0.5990	0.4064	0.3865	0.4419	0.8609	0.9367	0.9292	40- 50	1.115	51.70	99,67.6
60	0.2664	0.1894	0.1405	0.1502	0.1997	0.3634	0.3907	0.3592	50- 60	0.3561	52.06	99.7,68.1
70	0.0170	0.0071	0	0.0000	0.0003	0.0084	0.0158	0.0177	60- 70	0.1542	52.21	100,68.3
80	0	0	0	0	0	0	0	0	70- 80	0.0011	52.22	100,68.3
90	0	0	0	0	0	0	0	0	80- 90	0	52.22	100,68.3
100	0	0	0	0	0	0	0	0	90-100	0	52.22	100,68.3
110	0	0	0	0	0	0	0	0	100-110	0	52.22	100,68.3
120	0	0	0	0	0	0	0	0	110-120	0	52.22	100,68.3
130	0	0	0	0	0	0	0	0	120-130	0	52.22	100,68.3
140	0	0	0	0	0	0	0	0	130-140	0	52.22	100,68.3
150	0	0	0	0	0	0	0	0	140-150	0	52.22	100,68.3
160	0	0	0	0	0	0	0	0	150-160	0	52.22	100,68.3
170	0	0	0	0	0	0	0	0	160-170	0	52.22	100,68.3
180	0	0	0	0	0	0	0	0	170-180	0	52.22	100,68.3
DEG	LUMINOUS INTENSITY:cd									UNIT:lm		

C Range: 0 - 360DEG
C Interval: 30.0DEG
Test Speed: HIGH
Temperature:25.3℃
Operators:zoe
Test Date:2024-10-14

γ Range: 0 - 180DEG
 γ Interval: 1.0DEG
Test System:EVERFINE GO-SPEX500_V1 SYSTEM V2.00.461
Humidity:65.0%
Test Distance:3.160m [K=1.0000]
Remarks: LAMP:BXCP-30G-11L-J11-3-A1-00-0-0 Ra:90
LENS:PM-0137 30R
NOT DRIVER:300mA
30minutes warm-up

LUMINANCE LIMITATION CURVES

Test:U:3.0612V I:0.3000A P:0.9184W PF:1.0000 Freq:49.99Hz
Lamp Flux:76.466x1 lm

NAME: 2468.100

TYPE:

WEIGHT:

SPEC.: 3000K

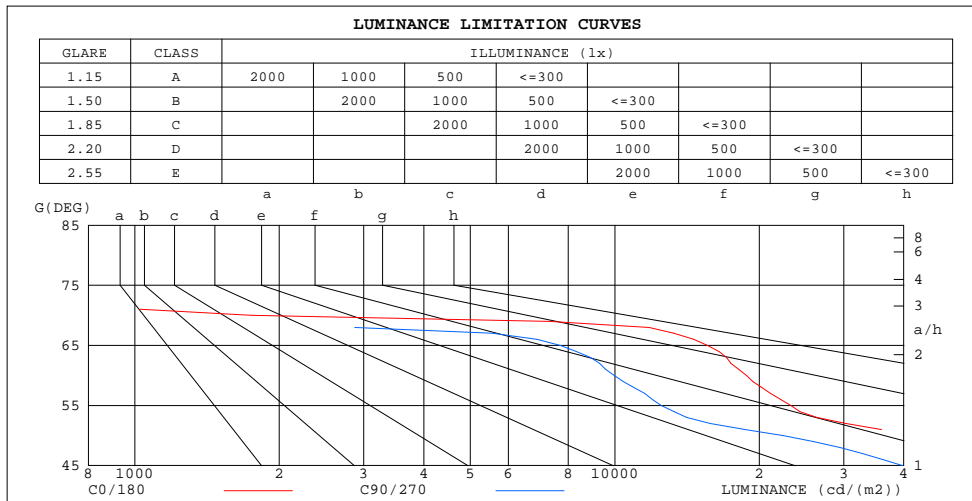
DIM.:

SERIAL No.: 2410141243

MFR.: RISE

SUR.: 0.00002826m2

Shielding Angle:



LUMINANCE cd/(m2)		
G(DEG)	C0/180	C90/270
85	0	0
80	0	0
75	0	0
70	1750	0
65	15604	7699
60	18803	9983
55	23267	12495
50	41843	22469
45	76517	39846

C Range: 0 - 360DEG
C Interval: 30.0DEG
Test Speed: HIGH
Temperature:25.3℃
Operators:zoe
Test Date:2024-10-14

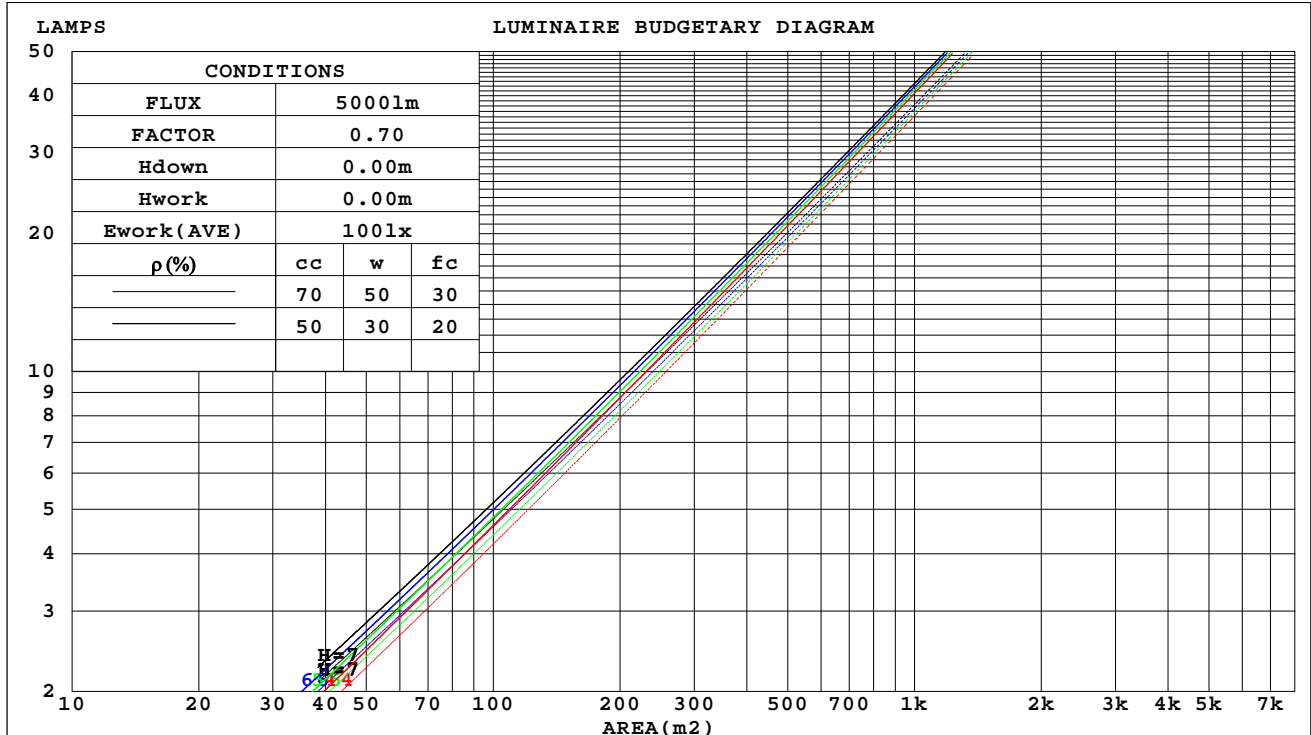
γ Range: 0 - 180DEG
γ Interval: 1.0DEG
Test System:EVERFINE GO-SPEX500_V1 SYSTEM V2.00.461
Humidity:65.0%
Test Distance:3.160m [K=1.0000]
Remarks: LAMP:BXCP-30G-11L-J11-3-A1-00-0-0 Ra:90
LENS:PM-0137 30R
NOT DRIVER:300mA
30minutes warm-up

CU AND LUMINAIRE BUDGETARY ESTIMATE DIAGRAM

Test:U:3.0612V I:0.3000A P:0.9184W PF:1.0000 Freq:49.99Hz
Lamp Flux:76.466x1 lm

NAME: 2468.100	TYPE:	WEIGHT:
SPEC.: 3000K	DIM.:	SERIAL No.: 2410141243
MFR.: RISE	SUR.: 0.00002826m2	Shielding Angle:

pcc	80%			70%			50%			30%			10%			0
pw	50%	30%	10%	50%	30%	10%	50%	30%	10%	50%	30%	10%	50%	30%	10%	0
pfc	20%			20%			20%			20%			20%			0
RCR	RCR:Room Cavity Ratio															



C Range: 0 - 360DEG
C Interval: 30.0DEG
Test Speed: HIGH
Temperature:25.3℃
Operators:zoe
Test Date:2024-10-14

γ Range: 0 - 180DEG
γ Interval: 1.0DEG
Test System:EVERFINE GO-SPEX500_V1 SYSTEM V2.00.461
Humidity:65.0%
Test Distance:3.160m [K=1.0000]
Remarks: LAMP:BXCP-30G-11L-J11-3-A1-00-0-0 Ra:90
LENS:PM-0137 30R
NOT DRIVER:300mA
30minutes warm-up

WEC AND CCEC

Test:U:3.0612V I:0.3000A P:0.9184W PF:1.0000 Freq:49.99Hz Lamp Flux:76.466x1 lm		
NAME: 2468.100	TYPE:	WEIGHT:
SPEC.: 3000K	DIM.:	SERIAL No.: 2410141243
MFR.: RISE	SUR.: 0.00002826m2	Shielding Angle:

pcc	80%			70%			50%			30%			10%			0	
pw	50%	30%	10%	50%	30%	10%	50%	30%	10%	50%	30%	10%	50%	30%	10%	0	
pfc	20%			20%			20%			20%			20%			0	
RCR	RCR:Room Cavity Ratio						Wall Exitance Coefficients(WEC)										
0.0																	
1.0	.097	.055	.017	.092	.053	.017	.084	.048	.015	.076	.044	.014	.069	.040	.013		
2.0	.090	.049	.015	.086	.048	.015	.079	.044	.014	.073	.041	.013	.067	.038	.012		
3.0	.084	.045	.013	.081	.044	.013	.075	.041	.012	.070	.038	.012	.065	.036	.011		
4.0	.079	.041	.012	.077	.040	.012	.072	.038	.011	.067	.036	.011	.063	.034	.010		
5.0	.075	.038	.011	.073	.037	.011	.068	.036	.010	.064	.034	.010	.061	.032	.010		
6.0	.071	.036	.010	.069	.035	.010	.065	.033	.010	.062	.032	.009	.059	.031	.009		
7.0	.067	.033	.009	.066	.033	.009	.062	.032	.009	.059	.030	.009	.057	.029	.009		
8.0	.064	.031	.009	.063	.031	.009	.060	.030	.009	.057	.029	.008	.055	.028	.008		
9.0	.061	.030	.008	.060	.029	.008	.057	.028	.008	.055	.028	.008	.053	.027	.008		
10.0	.059	.028	.008	.057	.028	.008	.055	.027	.008	.053	.026	.008	.051	.026	.007		

pcc	80%			70%			50%			30%			10%			0
pw	50%	30%	10%	50%	30%	10%	50%	30%	10%	50%	30%	10%	50%	30%	10%	0
pfc	20%			20%			20%			20%			20%			0
RCR	RCR:Room Cavity Ratio						Ceiling Cavity Exitance Coefficients(CCEC)									
0.0	.130	.130	.130	.111	.111	.111	.076	.076	.076	.044	.044	.044	.014	.014	.014	
1.0	.115	.108	.101	.099	.092	.087	.067	.064	.060	.039	.037	.035	.012	.012	.011	
2.0	.103	.091	.080	.088	.078	.069	.060	.054	.048	.035	.031	.028	.011	.010	.009	
3.0	.093	.077	.065	.080	.067	.056	.055	.046	.039	.032	.027	.023	.010	.009	.008	
4.0	.085	.067	.053	.073	.058	.046	.050	.040	.033	.029	.024	.019	.009	.008	.006	
5.0	.078	.059	.044	.067	.051	.039	.046	.035	.027	.027	.021	.016	.009	.007	.005	
6.0	.072	.052	.038	.062	.045	.033	.043	.031	.023	.025	.018	.014	.008	.006	.005	
7.0	.067	.046	.032	.057	.040	.028	.040	.028	.020	.023	.017	.012	.007	.005	.004	
8.0	.062	.042	.028	.054	.036	.024	.037	.025	.017	.022	.015	.010	.007	.005	.003	
9.0	.058	.038	.024	.050	.033	.021	.035	.023	.015	.020	.014	.009	.007	.004	.003	
10.0	.055	.035	.021	.047	.030	.018	.033	.021	.013	.019	.013	.008	.006	.004	.003	

C Range: 0 - 360DEG
C Interval: 30.0DEG
Test Speed: HIGH
Temperature:25.3℃
Operators:zoe
Test Date:2024-10-14

γ Range: 0 - 180DEG
γ Interval: 1.0DEG
Test System:EVERFINE GO-SPEX500_V1 SYSTEM V2.00.461
Humidity:65.0%
Test Distance:3.160m [K=1.0000]
Remarks: LAMP:BXCP-30G-11L-J11-3-A1-00-0-0 Ra:90
LENS:PM-0137 30R
NOT DRIVER:300mA
30minutes warm-up

UGR(Unified Glare Rating) Table

Test:U:3.0612V I:0.3000A P:0.9184W PF:1.0000 Freq:49.99Hz Lamp Flux:76.466x1 lm											
NAME: 2468.100					TYPE:			WEIGHT:			
SPEC.: 3000K					DIM.:			SERIAL No.: 2410141243			
MFR.: RISE					SUR.: 0.00002826m2			Shielding Angle:			
ceiling/cavity	0.7	0.7	0.5	0.5	0.3	0.7	0.7	0.5	0.5	0.3	
walls	0.5	0.3	0.5	0.3	0.3	0.5	0.3	0.5	0.3	0.3	
working plane	0.2	0.2	0.2	0.2	0.2	0.2	0.2	0.2	0.2	0.2	
Room dimensions	Viewed crosswise					Viewed endwise					
x = 2H y = 2H	28.6	29.3	28.8	29.4	29.6	26.6	27.2	26.8	27.4	27.5	
	3H	28.5	29.1	28.8	29.3	29.5	26.4	27.1	26.7	27.3	27.5
	4H	28.4	29.0	28.7	29.2	29.5	26.4	27.0	26.6	27.2	27.4
	6H	28.3	28.9	28.6	29.2	29.4	26.3	26.8	26.6	27.1	27.3
	8H	28.3	28.9	28.6	29.1	29.4	26.2	26.8	26.5	27.0	27.3
	12H	28.3	28.8	28.6	29.0	29.3	26.2	26.7	26.5	27.0	27.2
4H	2H	28.4	29.0	28.7	29.2	29.4	26.4	27.0	26.7	27.2	27.4
	3H	28.3	28.8	28.6	29.1	29.4	26.3	26.8	26.6	27.1	27.3
	4H	28.2	28.7	28.5	29.0	29.3	26.2	26.7	26.5	26.9	27.2
	6H	28.1	28.5	28.5	28.9	29.2	26.1	26.5	26.4	26.8	27.2
	8H	28.1	28.5	28.4	28.8	29.2	26.0	26.4	26.4	26.8	27.1
	12H	28.0	28.4	28.4	28.7	29.1	26.0	26.3	26.4	26.7	27.1
8H	4H	28.1	28.5	28.4	28.8	29.2	26.0	26.4	26.4	26.8	27.1
	6H	27.9	28.3	28.4	28.7	29.1	25.9	26.2	26.3	26.6	27.0
	8H	27.9	28.2	28.3	28.6	29.0	25.8	26.1	26.3	26.6	27.0
	12H	27.8	28.1	28.3	28.5	29.0	25.8	26.0	26.2	26.5	26.9
12H	4H	28.0	28.4	28.4	28.7	29.1	26.0	26.3	26.4	26.7	27.1
	6H	27.9	28.2	28.3	28.6	29.0	25.8	26.1	26.3	26.6	27.0
	8H	27.8	28.1	28.3	28.5	29.0	25.8	26.0	26.2	26.5	26.9
Variations with the observer position at spacings(CIE Pub.117):											
S = 1.0H	+ 3.9 / - 7.9					+ 2.8 / - 8.3					
1.5H	+ 5.9 / - 7.8					+ 4.7 / - 6.2					
2.0H	+ 5.8 / - 4.2					+ 4.4 / - 4.5					

CIE Pub.117, 76.47 lm Total Lamp Luminous Flux Correct (8log(F/F0) = -8.9)
Area: 2.82e-005 m2

C Range: 0 - 360DEG
C Interval: 30.0DEG
Test Speed: HIGH
Temperature:25.3℃
Operators:zoe
Test Date:2024-10-14

γ Range: 0 - 180DEG
γ Interval: 1.0DEG
Test System:EVERFINE GO-SPEX500_V1 SYSTEM V2.00.461
Humidity:65.0%
Test Distance:3.160m [K=1.0000]
Remarks: LAMP:BXCP-30G-11L-J11-3-A1-00-0-0 Ra:90
LENS:PM-0137 30R
NOT DRIVER:300mA
30minutes warm-up

UTILIZATION FACTORS TABLE

Test:U:3.0612V I:0.3000A P:0.9184W PF:1.0000 Freq:49.99Hz Lamp Flux:76.466x1 lm		
NAME: 2468.100	TYPE:	WEIGHT:
SPEC.: 3000K	DIM.:	SERIAL No.: 2410141243
MFR.: RISE	SUR.: 0.00002826m2	Shielding Angle:

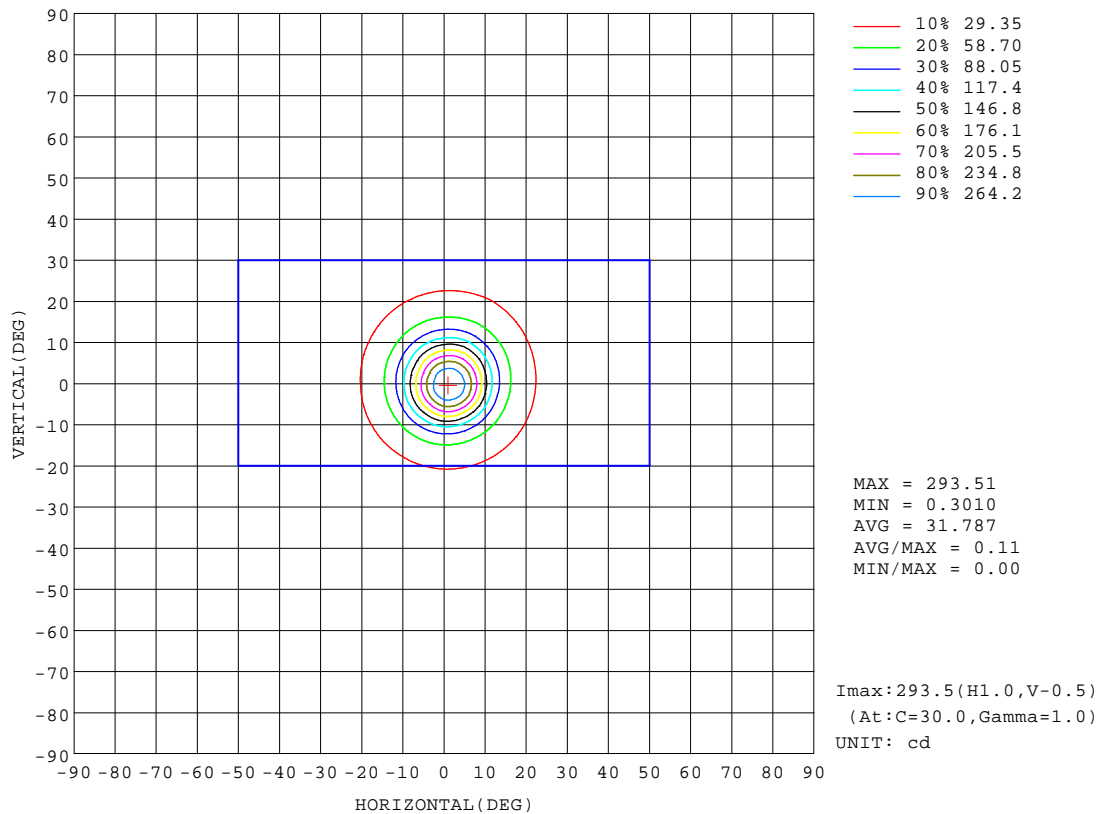
REFLECTANCE										
Ceiling	0.8	0.8	0.8	0.7	0.7	0.7	0.5	0.5	0.5	0
Walls	0.7	0.5	0.3	0.7	0.5	0.3	0.7	0.5	0.3	0
Working plane	0.2	0.2	0.2	0.2	0.2	0.2	0.2	0.2	0.2	0
ROOM INDEX	UTILIZATION FACTORS(PERCENT) $k(RI) \times RCR = 5$									
k = 0.60	61	57	55	61	57	55	60	57	55	52
0.80	66	62	60	66	62	60	65	62	60	57
1.00	69	65	63	68	65	63	67	65	62	60
1.25	71	68	66	71	68	66	69	67	65	62
1.50	73	70	68	72	70	68	71	69	67	64
2.00	75	72	70	74	71	69	72	70	68	65
2.50	76	73	71	75	72	71	73	71	70	66
3.00	77	75	73	76	74	72	73	72	71	66
4.00	78	76	75	77	75	74	74	73	72	67
5.00	79	77	76	77	76	75	75	74	73	68
ROOM INDEX	UF(total)									Direct
According to DIN EN 13032-2 2004			Suspended					SHRNOM = 1.25		

C Range: 0 - 360DEG
C Interval: 30.0DEG
Test Speed: HIGH
Temperature:25.3℃
Operators:zoe
Test Date:2024-10-14

γ Range: 0 - 180DEG
γ Interval: 1.0DEG
Test System:EVERFINE GO-SPEX500_V1 SYSTEM V2.00.461
Humidity:65.0%
Test Distance:3.160m [K=1.0000]
Remarks: LAMP:BXCP-30G-11L-J11-3-A1-00-0-0 Ra:90
LENS:PM-0137 30R
NOT DRIVER:300mA
30minutes warm-up

ISOCANDELA DIAGRAM

Test:U:3.0612V I:0.3000A P:0.9184W PF:1.0000 Freq:49.99Hz Lamp Flux:76.466x1 lm		
NAME: 2468.100	TYPE:	WEIGHT:
SPEC.: 3000K	DIM.:	SERIAL No.: 2410141243
MFR.: RISE	SUR.: 0.00002826m2	Shielding Angle:

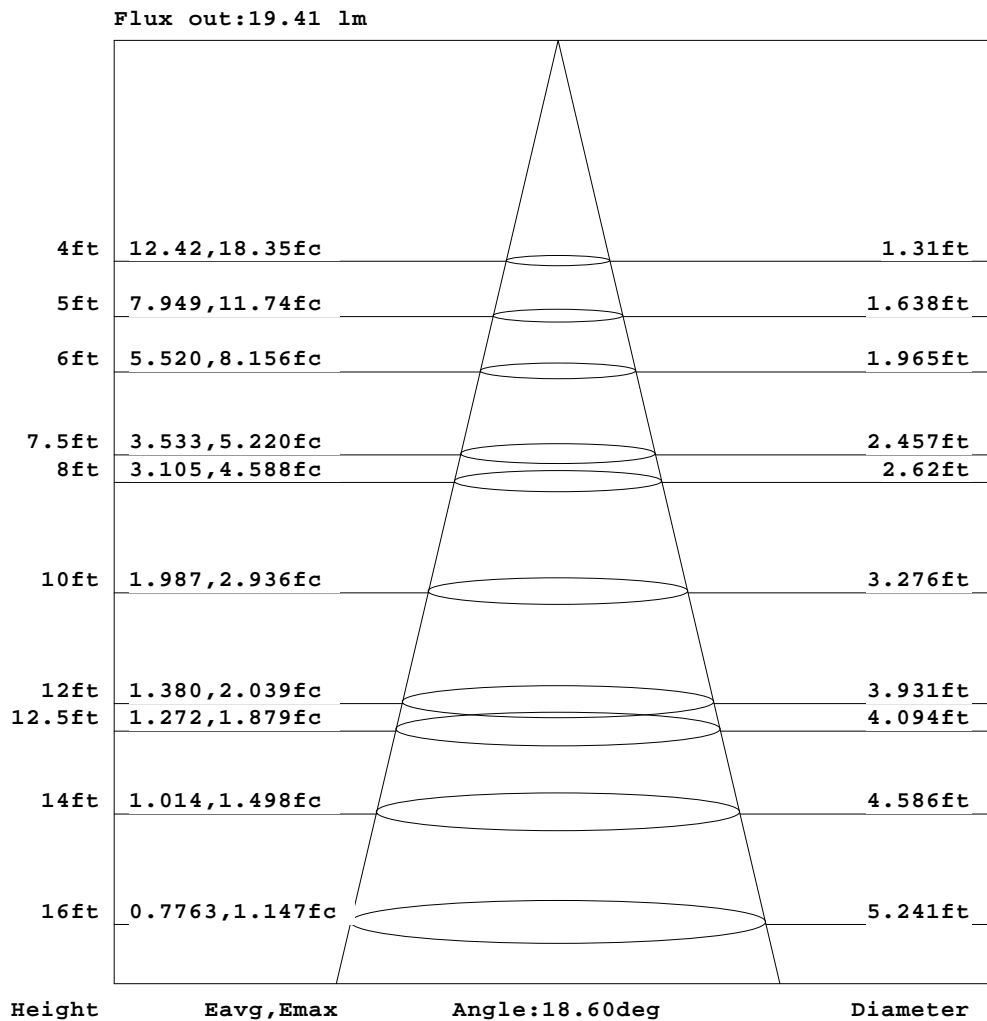


C Range: 0 - 360DEG
C Interval: 30.0DEG
Test Speed: HIGH
Temperature:25.3℃
Operators:zoe
Test Date:2024-10-14

γ Range: 0 - 180DEG
γ Interval: 1.0DEG
Test System:EVERFINE GO-SPEX500_V1 SYSTEM V2.00.461
Humidity:65.0%
Test Distance:3.160m [K=1.0000]
Remarks: LAMP:BXCP-30G-11L-J11-3-A1-00-0-0 Ra:90
LENS:PM-0137 30R
NOT DRIVER:300mA
30minutes warm-up

AAI Figure

Test:U:3.0612V I:0.3000A P:0.9184W PF:1.0000 Freq:49.99Hz Lamp Flux:76.466x1 lm		
NAME: 2468.100	TYPE:	WEIGHT:
SPEC.: 3000K	DIM.:	SERIAL No.: 2410141243
MFR.: RISE	SUR.: 0.00002826m2	Shielding Angle:



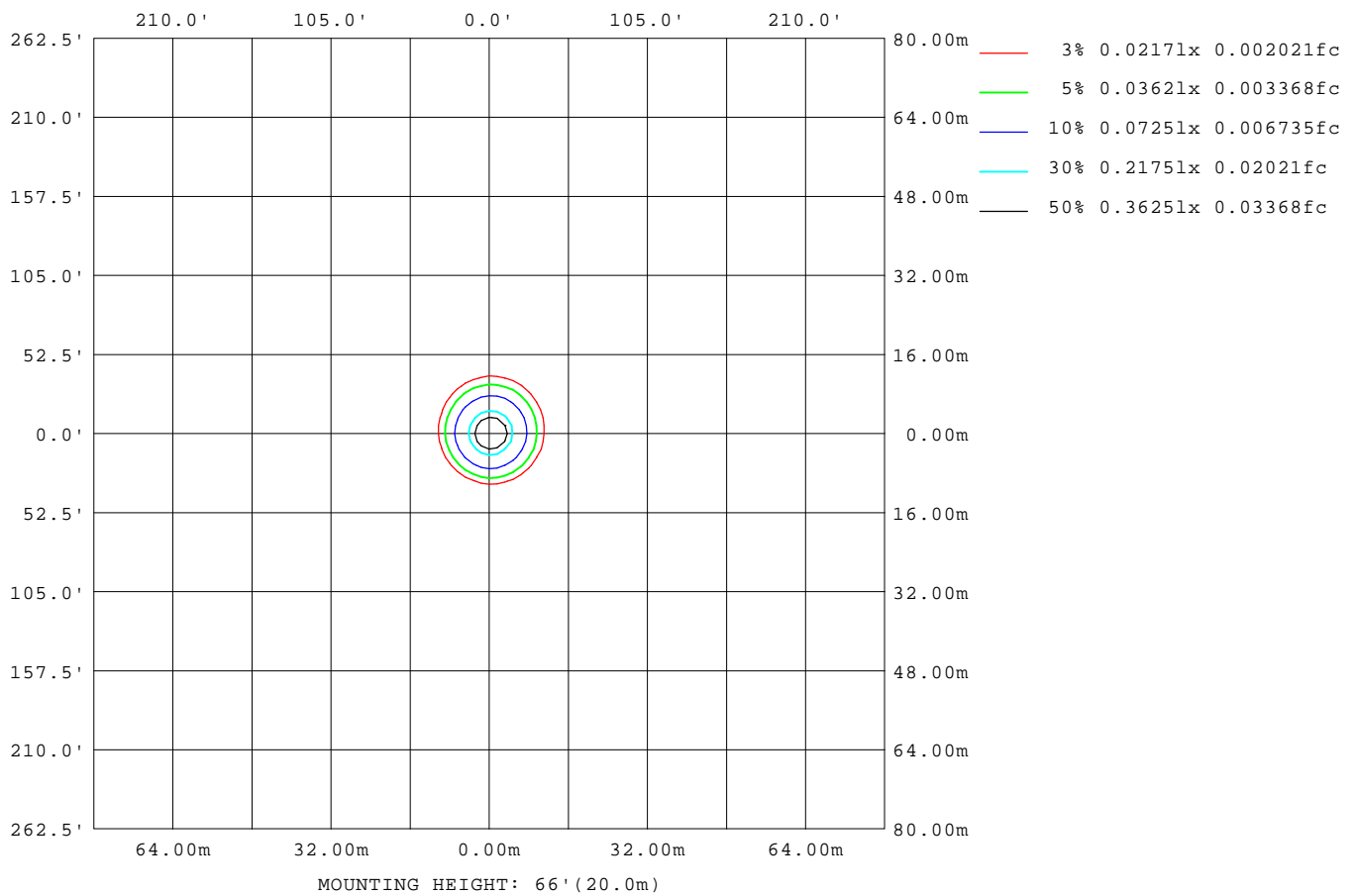
Note:The Curves indicate the illuminated area and the average illumination when the luminaire is at different distance.

C Range: 0 - 360DEG
C Interval: 30.0DEG
Test Speed: HIGH
Temperature:25.3℃
Operators:zoe
Test Date:2024-10-14

γ Range: 0 - 180DEG
γ Interval: 1.0DEG
Test System:EVERFINE GO-SPEX500_V1 SYSTEM V2.00.461
Humidity:65.0%
Test Distance:3.160m [K=1.0000]
Remarks: LAMP:BXCP-30G-11L-J11-3-A1-00-0-0 Ra:90
LENS:PM-0137 30R
NOT DRIVER:300mA
30minutes warm-up

ISOLUX DIAGRAM

Test:U:3.0612V I:0.3000A P:0.9184W PF:1.0000 Freq:49.99Hz Lamp Flux:76.466x1 lm		
NAME: 2468.100	TYPE:	WEIGHT:
SPEC.: 3000K	DIM.:	SERIAL No.: 2410141243
MFR.: RISE	SUR.: 0.00002826m2	Shielding Angle:



C Range: 0 - 360DEG
C Interval: 30.0DEG
Test Speed: HIGH
Temperature:25.3℃
Operators:zoe
Test Date:2024-10-14

γ Range: 0 - 180DEG
γ Interval: 1.0DEG
Test System:EVERFINE GO-SPEX500_V1 SYSTEM V2.00.461
Humidity:65.0%
Test Distance:3.160m [K=1.0000]
Remarks: LAMP:BXCP-30G-11L-J11-3-A1-00-0-0 Ra:90
LENS:PM-0137 30R
NOT DRIVER:300mA
30minutes warm-up

LED Avg.L Report

Test:U:3.0612V I:0.3000A P:0.9184W PF:1.0000 Freq:49.99Hz Lamp Flux:76.466x1 lm		
NAME: 2468.100	TYPE:	WEIGHT:
SPEC.: 3000K	DIM.:	SERIAL No.: 2410141243
MFR.: RISE	SUR.: 0.00002826m2	Shielding Angle:

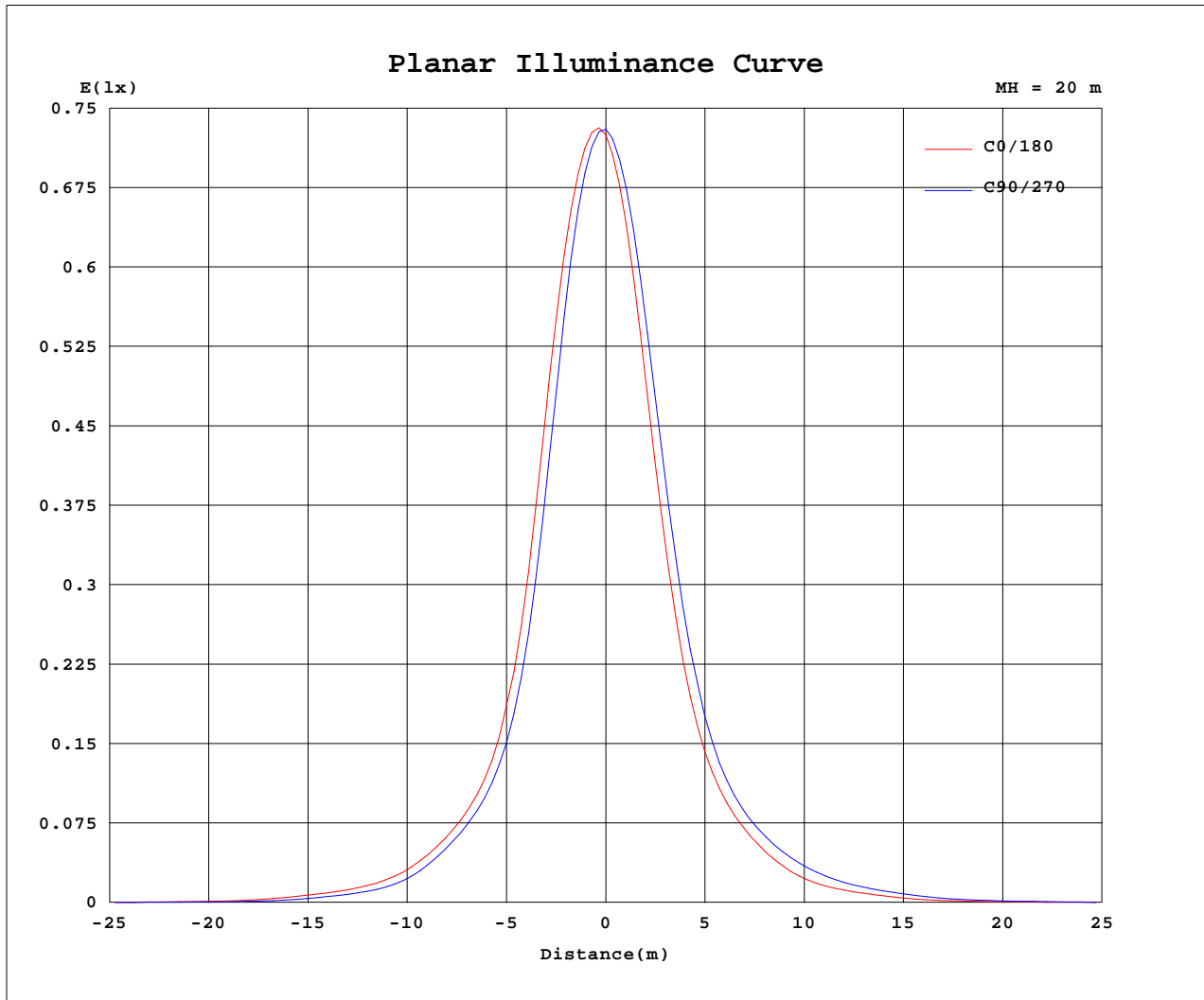
AvgL	cd/m2
L_0~180(65)av	12985
L_0~180(75)av	0
L_0~180(85)av	0
L_90~270(65)av	15315
L_90~270(75)av	0
L_90~270(85)av	0
L_45(65)av	15143
L_45(75)av	0
L_45(85)av	0

Standard: GB/T 29293-2012

C Range: 0 - 360DEG
C Interval: 30.0DEG
Test Speed: HIGH
Temperature:25.3℃
Operators:zoe
Test Date:2024-10-14

γ Range: 0 - 180DEG
γ Interval: 1.0DEG
Test System:EVERFINE GO-SPEX500_V1 SYSTEM V2.00.461
Humidity:65.0%
Test Distance:3.160m [K=1.0000]
Remarks: LAMP:BXCP-30G-11L-J11-3-A1-00-0-0 Ra:90
LENS:PM-0137 30R
NOT DRIVER:300mA
30minutes warm-up

Planar Illuminance Curve



C Range: 0 - 360DEG
 C Interval: 30.0DEG
 Test Speed: HIGH
 Temperature: 25.3 °C
 Operators: zoe
 Test Date: 2024-10-14

γ Range: 0 - 180DEG
 γ Interval: 1.0DEG
 Test System: EVERFINE GO-SPEX500_V1 SYSTEM V2.00.461
 Humidity: 65.0%
 Test Distance: 3.160m [K=1.0000]
 Remarks: LAMP: BXCP-30G-11L-J11-3-A1-00-0-0 Ra: 90
 LENS: PM-0137 30R
 NOT DRIVER: 300mA
 30minutes warm-up



LUMINOUS DISTRIBUTION INTENSITY DATA

Test:U:3.0612V I:0.3000A P:0.9184W PF:1.0000 Freq:49.99Hz Lamp Flux:76.466x1 lm		
NAME: 2468.100	TYPE:	WEIGHT:
SPEC.: 3000K	DIM.:	SERIAL No.: 2410141243
MFR.: RISE	SUR.: 0.00002826m2	Shielding Angle:

Table--1

UNIT: cd

C(DEG) γ (DEG)	0	30	60	90	120	150	180	210	240	270	300	330						
0	291	291	291	291	291	291	291	291	291	291	291	291						
5	266	266	256	245	231	223	218	219	229	238	251	260						
10	157	152	136	127	118	114	113	116	126	136	150	155						
15	70.0	65.3	60.3	57.8	55.3	54.2	55.1	57.8	62.6	67.4	72.9	73.6						
20	38.1	35.8	33.4	32.1	30.5	30.0	30.5	32.4	34.9	37.8	40.4	39.8						
25	21.5	19.9	17.8	16.3	14.9	14.9	15.8	17.8	20.8	22.7	23.9	22.7						
30	11.5	9.95	8.71	7.72	7.30	7.49	8.42	9.88	11.7	13.4	13.9	12.9						
35	6.84	5.73	4.87	4.22	3.94	4.02	4.65	5.65	6.99	8.08	8.60	7.99						
40	3.40	2.66	2.12	1.69	1.58	1.65	1.98	2.63	3.59	3.97	4.34	4.03						
45	1.53	1.19	1.00	0.79	0.80	0.85	0.99	1.33	1.94	1.88	1.96	1.84						
50	0.76	0.64	0.56	0.41	0.39	0.38	0.44	0.64	1.08	0.94	0.95	0.91						
55	0.38	0.30	0.25	0.20	0.21	0.23	0.28	0.41	0.69	0.55	0.50	0.50						
60	0.27	0.21	0.17	0.14	0.14	0.16	0.20	0.31	0.42	0.39	0.36	0.35						
65	0.19	0.15	0.11	0.09	0.09	0.09	0.12	0.20	0.27	0.27	0.26	0.25						
70	0.02	0.01	0.01	0.00	0.00	0.00	0.00	0.01	0.01	0.02	0.02	0.02						
75	0.00	0.00	0.00	0.00	0.00	0.00	0.00	0.00	0.00	0.00	0.00	0.00						
80	0.00	0.00	0.00	0.00	0.00	0.00	0.00	0.00	0.00	0.00	0.00	0.00						
85	0.00	0.00	0.00	0.00	0.00	0.00	0.00	0.00	0.00	0.00	0.00	0.00						
90	0.00	0.00	0.00	0.00	0.00	0.00	0.00	0.00	0.00	0.00	0.00	0.00						
95	0.00	0.00	0.00	0.00	0.00	0.00	0.00	0.00	0.00	0.00	0.00	0.00						
100	0.00	0.00	0.00	0.00	0.00	0.00	0.00	0.00	0.00	0.00	0.00	0.00						
105	0.00	0.00	0.00	0.00	0.00	0.00	0.00	0.00	0.00	0.00	0.00	0.00						
110	0.00	0.00	0.00	0.00	0.00	0.00	0.00	0.00	0.00	0.00	0.00	0.00						
115	0.00	0.00	0.00	0.00	0.00	0.00	0.00	0.00	0.00	0.00	0.00	0.00						
120	0.00	0.00	0.00	0.00	0.00	0.00	0.00	0.00	0.00	0.00	0.00	0.00						
125	0.00	0.00	0.00	0.00	0.00	0.00	0.00	0.00	0.00	0.00	0.00	0.00						
130	0.00	0.00	0.00	0.00	0.00	0.00	0.00	0.00	0.00	0.00	0.00	0.00						
135	0.00	0.00	0.00	0.00	0.00	0.00	0.00	0.00	0.00	0.00	0.00	0.00						
140	0.00	0.00	0.00	0.00	0.00	0.00	0.00	0.00	0.00	0.00	0.00	0.00						
145	0.00	0.00	0.00	0.00	0.00	0.00	0.00	0.00	0.00	0.00	0.00	0.00						
150	0.00	0.00	0.00	0.00	0.00	0.00	0.00	0.00	0.00	0.00	0.00	0.00						
155	0.00	0.00	0.00	0.00	0.00	0.00	0.00	0.00	0.00	0.00	0.00	0.00						
160	0.00	0.00	0.00	0.00	0.00	0.00	0.00	0.00	0.00	0.00	0.00	0.00						
165	0.00	0.00	0.00	0.00	0.00	0.00	0.00	0.00	0.00	0.00	0.00	0.00						
170	0.00	0.00	0.00	0.00	0.00	0.00	0.00	0.00	0.00	0.00	0.00	0.00						
175	0.00	0.00	0.00	0.00	0.00	0.00	0.00	0.00	0.00	0.00	0.00	0.00						
180	0.00	0.00	0.00	0.00	0.00	0.00	0.00	0.00	0.00	0.00	0.00	0.00						

C Range: 0 - 360DEG
C Interval: 30.0DEG
Test Speed: HIGH
Temperature:25.3℃
Operators:zoe
Test Date:2024-10-14

γ Range: 0 - 180DEG
γ Interval: 1.0DEG
Test System:EVERFINE GO-SPEX500_V1 SYSTEM V2.00.461
Humidity:65.0%
Test Distance:3.160m [K=1.0000]
Remarks: LAMP:BXCP-30G-11L-J11-3-A1-00-0-0 Ra:90
LENS:PM-0137 30R
NOT DRIVER:300mA
30minutes warm-up